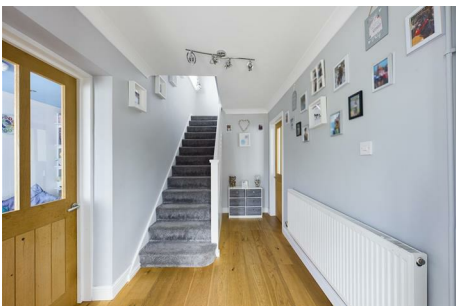


Courtfield Avenue, Lordswood,  
ME5

Offers Over £400,000



- TASTEFULLY EXTENDED
- 3/4 BEDROOMS
- MODERN BATHROOM

- UTILITY ROOM
- REAR GARDEN
- LARGE KITCHEN/DINING AREA

- OFF ROAD PARKING 3 CARS
- POPULAR LOCATION
- WELL PRESENTED

Contact us for more details:

Tel: 01634 735335 Email: [justine@medwaymortgageshop.co.uk](mailto:justine@medwaymortgageshop.co.uk)

Full listings online at [www.medwaymortgageshop.co.uk](http://www.medwaymortgageshop.co.uk)